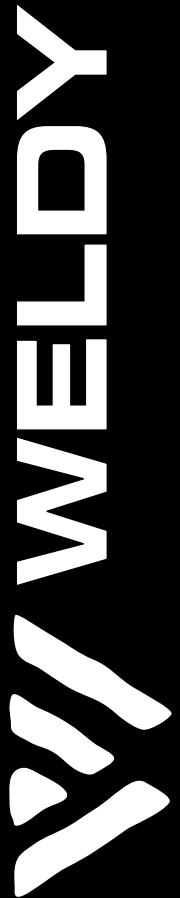




Product overview 2016/17

simple. good. affordable.



Welcome

Company Introduction

Weldy is a global provider of functional tools with a good price/performance ratio for the fields of plastic welding and shrinking. Our products are used for an extensive range of welding applications, including:

- Plastic welding
- Roofing
- Flooring
- Overlap welding (Tarpaulin, Billboard..)
- Extrusion welding
- and many more!

All our products have been developed and tested by experienced teams. The tools are manufactured at our quality certified production plant in Shanghai (China).

Our hot air tools are successfully used all around the globe. In more than 80 countries professionals work with Weldy. Proving Weldy to be the hottest tool for cost-conscious people.

SWISS know-how & technology combined with the competence center in Shanghai

- ✓ Reliable and experienced – since more than 15 years
- ✓ All tools pass a 100% quality, function and safety check according to Swiss standard
- ✓ Professional support and advisory service
- ✓ Interesting product range including a wide selection of accessories
- ✓ Professional quality management (ISO 9001:2008)
- ✓ Worldwide delivery (know-how and experience)!



Visit our YouTube-Channel: www.youtube.com/WELDYhotairtools



Content



Plastic Fabrication

| | |
|-------------------------------|------------|
| energy HT1600 / energy HT3400 | p. 4 – 6 |
| booster EX2 | p. 8 |
| booster EX3 | p. 9 |
| Accessories | p. 18 – 21 |



Roofing

| | |
|-------------------------------|------------|
| energy HT1600 / energy HT3400 | p. 4 – 6 |
| roofer RW3400 | p. 10 / 11 |
| Accessories | p. 18 – 21 |



Tarpaulins, Industrial Fabrics, Billboards

| | |
|-----------------------------------|------------|
| energy HT1600 / HT3400 / HG2300 | p. 4 – 7 |
| foiler ET / foiler ETL | p. 12 – 14 |
| RW3400-combi T40 | p. 15 |
| plus-S / fuego / pic / pro / plus | p. 22 – 29 |
| Eylet hand pressing tool ET10 | p. 30 |
| Accessories | p. 18 – 21 |



Civil Engineering

| | |
|-----------------------------|------------|
| energy HT1600 / energy 3400 | p. 4 – 6 |
| booster EX2 | p. 8 |
| booster EX3 | p. 9 |
| miniwelder geo2 | p. 16 |
| leak tightness tester | p. 17 |
| Accessories | p. 20 / 22 |



Other Hand Tool Applications

| | |
|-----------------------------------|------------|
| energy HT1600 / energy HT3400 | p. 4 – 6 |
| industrial HG2300 | p. 7 |
| plus-S / fuego / pic / pro / plus | p. 22 – 29 |
| Accessories | p. 18 – 21 |

Hot Air Hand Tool

energy HT1600



Electronic heating element protection and heating tube protection for more security

Two different sorts of packaging (cardboard box / plastic case) available



Washable, exchangeable and reusable filter

- Handy and reliable
- Economical and universal
- Up to 700°C
- Long lifetime – heating element protection
- Swiss technology and engineering
- 100 % quality, function and safety check
- Professional tool
- CE-Conformity marking
- Protection class II

Powerful hot air tools for any application

| | | |
|---------------------------|-------|------------------------|
| Voltage | V~ | 120 / 230 |
| Power | W | 1600 |
| Temperature | °C | 40 – 700 |
| Air flow (20°C) | l/min | 240 |
| Weight (without 3 m cord) | kg | 1 |
| Size (L × Ø) | mm | 346 × 101, handle Ø 59 |
| Protection class II | | |

Order No.:

energy HT1600, EU-plug, 230 V 120.881*

energy HT1600, US-plug, 120 V 123.898*

*cardboard box included in purchase



Certifications



kits 5
 General accessories 20/21

Our HT1600 kits

Plastic welding kit including:



Tubular nozzle Ø 5 mm



Speed welding nozzle
Ø 4 mm



Plastic case

Overlap welding kit including:



Wide slot nozzle 20 mm



Wide slot nozzle 40 mm



Pressure roller 40 mm



Plastic case

Heat shrinking kit including:



Wide slot nozzle 20 mm



Wide slot nozzle 40 mm



Reflector nozzle



Plastic case

| Order No. | plastic welding kit | overlap welding kit | heat shrinking kit |
|---------------------|---------------------|---------------------|--------------------|
| With EU-plug, 230 V | 120.883 | 120.882 | 125.015 |
| With UK-plug, 230 V | upon request | upon request | 125.016 |
| With US-plug, 120 V | 120.886 | 120.885 | upon request |

Wide range of accessories and supplies available



Pressure roller 40 mm



Tubular nozzle Ø 5 mm



Speed welding nozzle
Ø 4 or 5 mm



Tacking nozzle

Hot Air Hand Tool

energy HT3400



Machine integration



Loosening of screws



Shrinking

- Handy and reliable
- High power and maximum airflow
- Up to 650°C
- Long lifetime – heating element protection
- Swiss technology and engineering
- 100 % quality, function and safety check
- Professional tool
- -Conformity marking
- Protection class II

Powerful hot air tools for any application

| | | |
|-----------------------|-------|------------------------|
| Voltage | V~ | 230 |
| Power | W | 3400 |
| Temperature | °C | 20 – 650 |
| Air flow (20°C) | l/min | 320 |
| Weight (with 3m cord) | kg | 1.3 |
| Size (L × Ø) | mm | 348 × 101, handle Ø 59 |
| Protection class II | | |

Order No.:

energy HT3400, EU plug, 230 V
cardboard box included in purchase

128.723



Certifications



General accessories 20/21

Hot Air Heat Gun

industrial HG2300



Edges in furniture manufacturing



Cable production and marking



Fixable tool stand included

- Ergonomic heat gun
- Digital temperature control
- Five-stage air flow control
- Long lifetime
- Advanced technology and engineering
- 100 % quality, function and safety check
- Professional tool
- -Conformity marking
- Protection class II

| | | |
|-----------------------|-------|----------------|
| Voltage | V~ | 230 |
| Power | W | 2300 |
| Temperature | °C | 40 – 620 |
| Air flow | l/min | 140 – 270 |
| Weight (with 3m cord) | kg | 1.18 |
| Size (L × H × W) | mm | 280 × 220 × 90 |



Order No. and scope of delivery for industrial HG2300 upon request


Certifications

CB

Extrusion Welder

booster EX2



| | | |
|------------------------|------|---|
| Voltage | V~ | 230 |
| Power | W | 3000 |
| Welding rod PE / PP | ∅ mm | 3 / 4 |
| Output max. ∅ 3 mm | kg/h | PE 1.5 / PP 1.5 |
| Output max. ∅ 4 mm | | PE 2.2 / PP 2.2 |
| Dimensions (L × W × H) | mm | 500 × 250 × 410 |
| Weight (with 3m cord) | kg | 6.4 |
| Protection class II | |  |
| Certification scheme | | CE |

Order No.: booster EX2, EU-plug

146.738




General accessories 18/19 

Extrusion Welder

booster EX3



| | | |
|------------------------|------|---|
| Voltage | V~ | 230 |
| Power | W | 3000 |
| Welding rod PE / PP | ∅ mm | 3 / 4 |
| Output max. ∅ 3 mm | kg/h | PE 2.4 / PP 2.4 |
| Output max. ∅ 4 mm | | PE 3.4 / PP 3.4 |
| Dimensions (L × W × H) | mm | 630 × 250 × 410 |
| Weight (with 3m cord) | kg | 6.9 |
| Protection class II | |  |
| Certification scheme | | CE |



Order No.: booster EX3, EU-plug


146.917

General accessories 18/19 

Hot Air Welder

roofer RW3400



| | | |
|---|-------|---|
| Voltage | V~ | 230 |
| Power | W | 3500 |
| Temperature | °C | 20 – 600 |
| Speed | m/min | 1.0 – 7.5 |
| Welding seam width | mm | 40 |
| Dimensions (L × W × H) (without guide bar) | mm | 445 × 280 × 320 |
| Weight | kg | 16 |
| Protection class I | |  |

Order No.:

roofer RW3400, 40 mm, 16 A CEE-plug 145.590
 roofer RW3400, 40 mm, EU-plug 145.450



General accessories 18/19 

Hot Air Welder

roofer RW3400



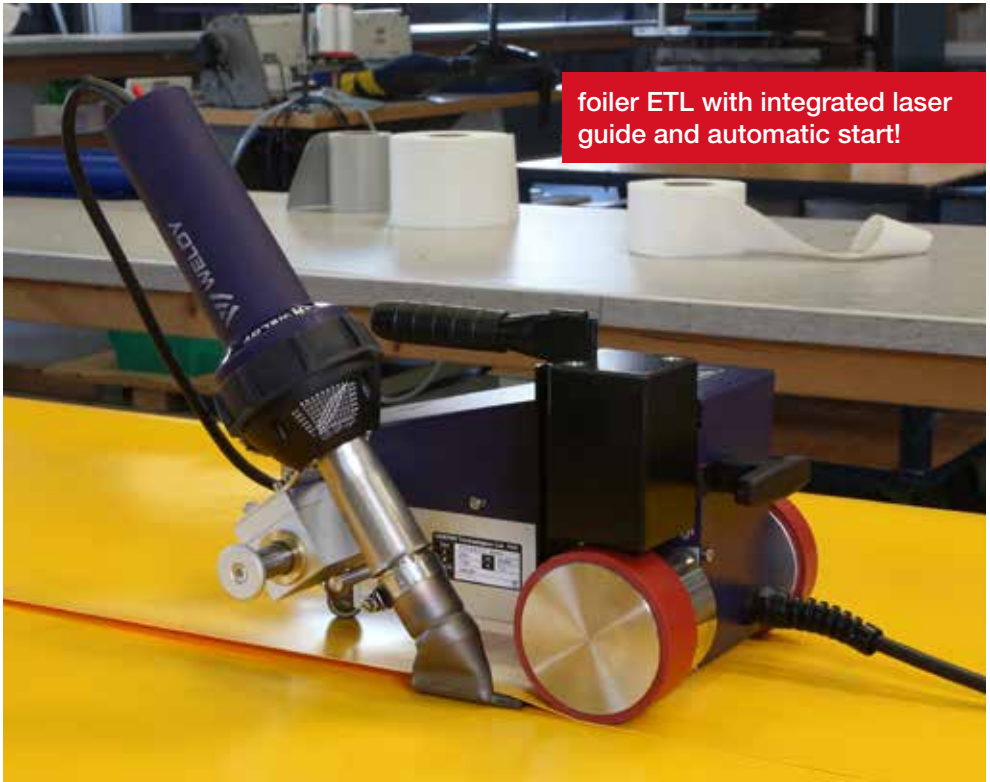
**Aluminium box
included in purchase**




- ✓ Guide bar and lifting device for easy handling
- ✓ Automatic driving and welding start
- ✓ Integrated laser guide
- ✓ Rugged aluminium box, stackable, and with plenty of space for additional tools

Hot Air Welder

foiler ETL



| | | |
|------------------------|-------|---|
| Voltage | V~ | 230 |
| Power | W | 1700 |
| Temperature | °C | 20 – 480 |
| Speed | m/min | 1.0 – 7.5 |
| Welding seam width | mm | 20 or 30 |
| Dimensions (L × W × H) | mm | 445 × 276 × 320 |
| Weight | kg | 11** |
| Protection class I | |  |

| | | foiler ET* | foiler ETL |
|-------------------|----------------|------------|------------|
| Order No.: | 20 mm, EU-plug | 146.134 | 141.900 |
| | 30 mm, EU-plug | 146.285 | 141.901 |

*CN-Plug only

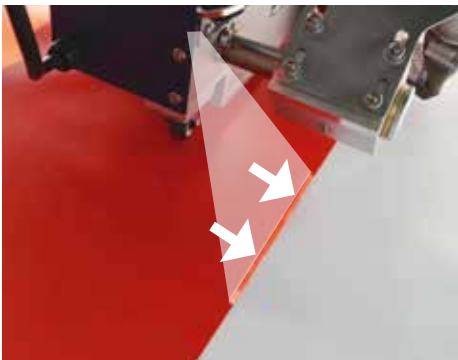
**optional weights with handle available



Accessories 18 

Hot Air Welder

foiler ETL



Laser guide for more accuracy



Easy handling due to automatic driving and welding start

Hot Air Welder

foiler



| | | |
|------------------------|-------|-----------------|
| Voltage | V~ | 230 |
| Power | W | 2100 |
| Temperature | °C | 80 – 530 |
| Speed | m/min | 1.0 – 7.5 |
| Welding seam width | mm | 20 or 30 |
| Dimensions (L × W × H) | mm | 445 × 276 × 280 |
| Weight | kg | 10.8* |
| Protection class I | | |

Order No.:

foiler, 20 mm, EU-plug
foiler, 30 mm, EU-plug

155.831
155.832

* optional weights with handle available




General accessories 18

Hot Air Welder

RW3400-combi T40



For 40 mm tape band

| | | |
|---|-------|---|
| Voltage | V~ | 230 |
| Power | W | 3500 |
| Temperature | °C | 20 – 600 |
| Speed | m/min | 1.0 – 7.5 |
| Welding seam width | mm | 40 |
| Dimensions (L × W × H) (without guide bar) | mm | 520 × 276 × 615 |
| Weight | kg | 17.8 |
| Protection class I | |  |

Order No.:

RW3400-combi T40, 40 mm, CEE-plug 125.828

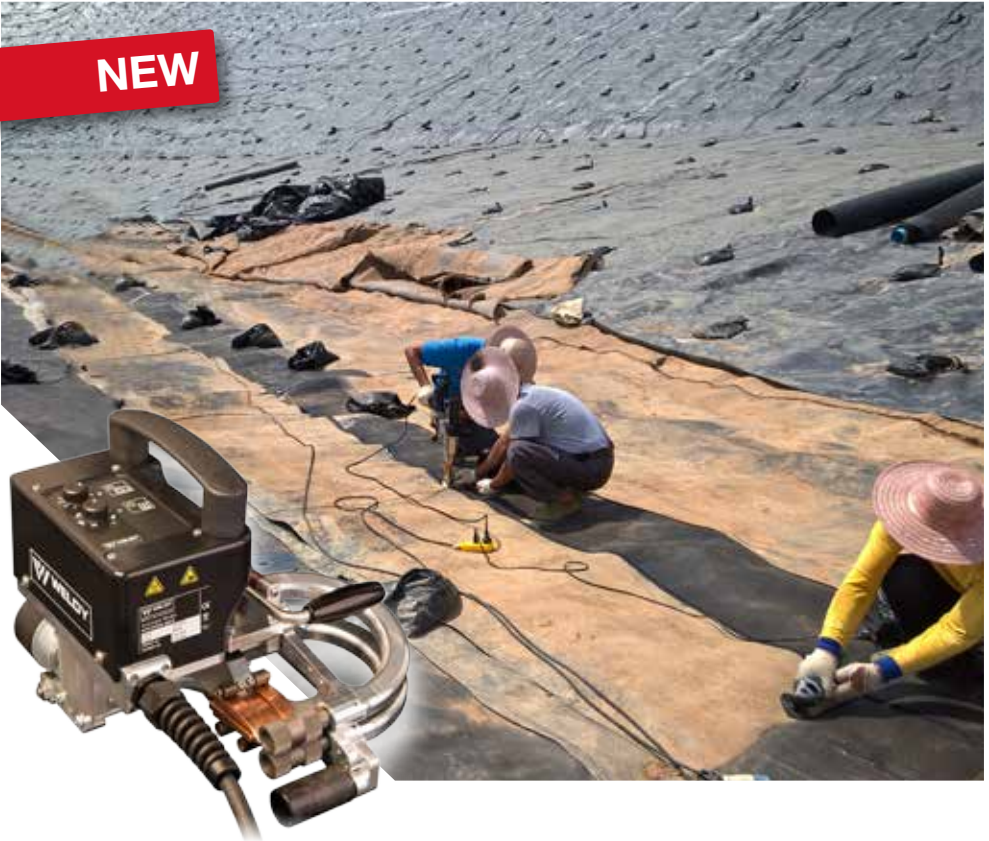


General accessories 19 

Wedge Welder

miniwelder geo2

NEW



| | | |
|------------------------|-------|--|
| Voltage | V~ | 230 |
| Power | W | 800 |
| Wedge Temperature | °C | 50 – 450 |
| Speed | m/min | 0.4 – 8.0 |
| Welding seam width | mm | 12 × 2, interior cavity 12 20 w/o interior cavity |
| Overlap width | mm | 100 |
| Material thickness | mm | 0.1 up to 2.0 |
| Dimensions (L × W × H) | mm | 228 × 228 × 170 |
| Weight | kg | 4.0 |
| Protection class I | | |



Order No.: miniwelder geo2, EU-plug 154.880

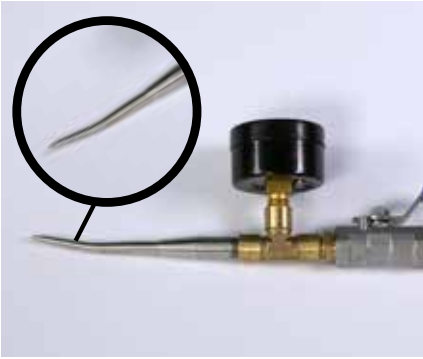
Testing device

leak tightness tester „T-Rex“

NEW



The accurate leakage indicator for geomembrane



Unique shaped and strong needle

- Corrosion free stainless steel
- Pressure indicator up to 6 bar
- Handy valve for air pressure opening and closing
- Tight and sealed air outlet
- Unique shaped needle for easy inserting onto the geomembrane
- Strong needle to withstand heavy duty field application
- Each nanometer is calibrated before leaving production site
- **Order no.: 124.306**

Your GEO-family



General accessory

18



Accessories

foiler / foiler ETL



foiler ETL



Overlap welding nozzle
20 mm
123.627



Lifting device
for foiler ET / ETL (only)
126.096



Overlap welding nozzle
30 mm
123.663



Heating element with
mica tube for foiler ET /
foiler ETL / 130.595



foiler



Weight with handle 3 kg
complete (not included
with purchase) 131.849



Heating element with
mica tube for Weldy Plus
(foiler) / 119.654

leak tightness tester



Replacement needle for
leak tightness tester
124.307

Supplies for booster / RW / ETL / foiler



Silicone pressure roller
40 mm
130.611



Brass brush
130.612



Silicone pressure roller
30 mm
130.146



Welding rod HDPE, black
Ø 4 mm, 5 kg bag
115.366



PTFE pressure roller
30 mm
131.693



Welding rod PP, natural
Ø 4 mm, 5 kg bag
115.355



Scraper
119.177



Scraper set
119.178

Accessories

booster EX2 / booster EX3



Welding shoe base complete
126.102



Welding shoe raw part
123.285



Welding shoe kit raw part
126.100



Welding shoe overlap 30/1.5
130.240



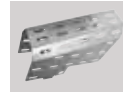
Welding shoe raw part
126.104



Heating element with mica tube for booster
116.900



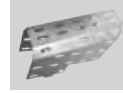
Welding shoe kit overlap 30/1.5
126.101



Heating protection EX2
126.098



Welding shoe overlap 30/1.5
126.103



Heating protection EX3
126.099



Welding shoe K8/10
126.105



Welding rod HDPE, black
Ø 4 mm, 5 kg bag
115.366



Welding shoe K15
126.106



Welding rod PP, natural
Ø 4 mm, 5 kg bag
115.355

Further welding shoes upon request

Accessories

roofer RW3400 / RW3400-combi T40



Overlap welding nozzle
40 mm
123.287



Heating element with mica tube for roofer
RW3400 / 130.594



Additional weight *
0.6 kg
132.028



Kit Weldy *
Tape 40 mm
150.369

* only for roofer RW3400

Accessories

energy HT1600



Wide slot nozzle 20 mm
130.631



Swan neck nozzle
133.174

NEW



Wide slot nozzle 40 mm
130.891



Reflector nozzle
119.344



Tubular nozzle Ø 5 mm
130.632



Sieve reflector
50 × 35 mm
148.442

NEW



Speed welding nozzle
Ø 4 mm
146.740



Tacking nozzle
147.248



Speed welding nozzle
Ø 5 mm
125.315



Heating element with
mica tube
230 V 123.805
120 V 123.895



Speed welding nozzle
7 mm triangle
127.833

energy HT3400



Reflector nozzle
130.633



Heating element with
mica tube for 3400
130.594



Wide slot nozzle 70 mm
130.650



Heating element with
mica tube for HT3400
124.322

Supplies for energy HT series



Silicone pressure roller
40 mm
130.611



Professional
quartermoon knife
153.894

NEW



Silicone pressure roller
30 mm
130.146



Quartermoon knife
124.336

NEW



PTFE pressure roller
30 mm
131.693



Leather sleeve for
quartermoon knife
153.895

NEW



Brass brush
130.612



Vinyl trimmer guide
132.050

NEW



Scraper
119.177



Corner roller brass
135.750

NEW



Scraper set
119.178



Sieve reflector
50 × 35 mm
148.442

NEW



Welding rod PP, natu-
ral Ø 4 mm, 5 kg bag
115.355



Welding rod HDPE,
black Ø 4 mm, 5 kg bag
115.366




Welding rods set
PP: 119.179
HDPE: 119.180
ABS: 119.181

Hot-Air Hand Tools

WELDY plus-S

NEW



| | | |
|------------------------|----|---|
| Voltage | V~ | 230 / 120 / 100 |
| Power | W | 2000 / 1500 / 1300 |
| Temperature | °C | 80 – 650 |
| Dimensions (L x H x W) | mm | 230 x 240 x 80 |
| Weight | kg | 0.8 |
| Protection class II | |  |

Order No.:

| | |
|---|---------|
| plus-S, 230V/2000W, EU-plug, kit | 155.730 |
| plus-S, 120V/1500W, US-plug polarized (UL), kit | 155.732 |
| plus-S, 100V/1300W, US-plug nonpol. (JP), kit | 155.733 |



Certifications CCA CB   

Reliable solution for various indoor applications



Shaping and heating



Shrinking

- Compact and ergonomic
- Standby mode for lower power consumption
- 2 component housing with soft grip
- Electrical temperature and air-flow adjustment (LCD display)
- 14 preset programs for plastic welding
- Heating element protection
- Multilingual menu in 8 languages
- Wide range of accessories
- Solid plastic case



Car wrapping

Included in kit purchase:

- Reflector nozzle
- Solder sleeve reflector
- Overlap welding nozzle
- Welding nozzle
- Pressure roller

Hot-Air Hand Tools

fuego HG1600



Removing stickers and films




Shrinking



Equipped with suspension arrangement



Loosening screws

| | | |
|------------------------|----|---|
| Voltage | V~ | 230 |
| Power | W | 1600 |
| Temperature | °C | 350 / 550 |
| Dimensions (L x H x W) | mm | 245 x 235 x 74 |
| Weight | g | 510 |
| Protection class II | |  |

Order No.:

fuego HG1600, 230V/1600W, EU-Plug 124.148



Certifications

CB  

A reliable entry level heat gun

NEW



350 / 550 °C
Temperature settings



350 / 500 l/min
Air flow



1600 W
Power



24h / 7 days operation



Lightweight



Easy to use



100% tested



mounting option by using
carabiner & spring balancer

2-stage air flow
350 / 500 l/min

ergonomic and
non-slip grip

optimized weight
balance



anti-slide rubber
support

dust protection

Hot Air Hand Tools

pic / pro



Shrinking



Automotive



Paint removal

- Easy to use
- Cost effective
- For wide range of indoor applications
- Selected accessories available
- Kits available

| Type | | pic | pro | plus |
|------------------------|----|----------------|-----------|----------|
| Voltage | V~ | 230 | 230 | 230 |
| Power | W | 1600 | 1800 | 2000 |
| Temperature | °C | 350 / 500 | 100 – 550 | 80 – 650 |
| Dimensions (L x H x W) | mm | 230 x 240 x 80 | | |
| Weight | g | 680 | 720 | 780 |
| Protection class II | | | | |

Different plugs, voltages (100 / 120 / 230 V) and accessories are available upon request.



Certifications CCA CB

General accessories 29

Hot Air Hand Tools

plus

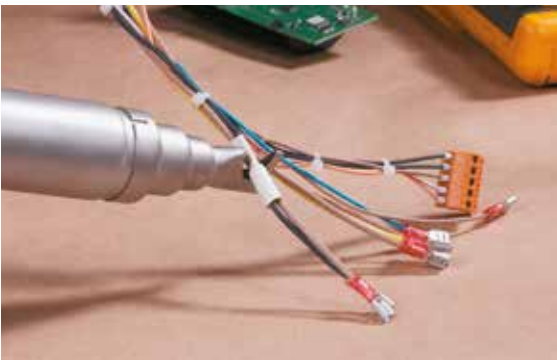


Edge banding



Plastic welding

- Electronical temperature and air-flow adjustment
- 14 preset programs for plastic welding
- LCD display
- Stand-by for eco drive
- Heating element protection
- Multilingual menu (DE, ES, FR, GB, IT, NL, PT, SE)
- Wide range of accessories
- Solid plastic case



Cable marking and shrinking

plus



General accessories

29



Our kits

pic kit



Wide slot nozzle



Reflector nozzle

Order No.

| | | |
|----------------|----------------|--------------|
| 122.707 | 100 V / 1100 W | JP plug |
| 122.703 | 120 V / 1200 W | US plug (UL) |
| 119.896 | 230 V / 1600 W | CN plug |
| 122.561 | 230 V / 1600 W | EU plug |
| 122.563 | 230 V / 1600 W | CH plug |
| 122.565 | 230 V / 1600 W | UK plug |
| 122.746 | 230 V / 1600 W | AUS plug |

pro kit



Reflector nozzle



Reducer nozzle



Glass protection nozzle

Order No.

| | | |
|----------------|----------------|--------------|
| 122.716 | 100 V / 1200 W | JP plug |
| 122.719 | 120 V / 1400 W | US plug (UL) |
| 119.897 | 230 V / 1800 W | CN plug |
| 119.274 | 230 V / 1800 W | EU plug |
| 122.614 | 230 V / 1800 W | CH plug |
| 122.554 | 230 V / 1800 W | UK plug |
| 122.753 | 230 V / 1800 W | AUS plug |

plus kit



Reflector nozzle



Reducer nozzle



Glass protection nozzle

Order No.

| | | |
|----------------|----------------|--------------|
| 122.841 | 100 V / 1300 W | JP plug |
| 122.843 | 120 V / 1500 W | US plug (UL) |
| 122.849 | 120 V / 1500 W | UK plug |
| 119.898 | 230 V / 2000 W | CN plug |
| 122.324 | 230 V / 2000 W | EU plug |
| 122.845 | 230 V / 2000 W | CH plug |
| 122.847 | 230 V / 2000 W | UK plug |
| 122.852 | 230 V / 2000 W | AUS plug |

Certifications

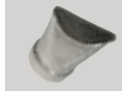
CCA CB



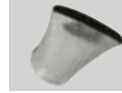
Accessories

pic / pro / plus / plus-S heat guns

Use only original nozzles according to the table that are suitable for your unit



Glass protection nozzle
119.341



Wide slot nozzle
119.342



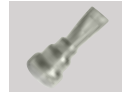
Reducer nozzle 20 mm
119.343
Only pro / plus / plus-S



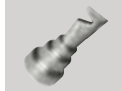
Reflector nozzle
119.344



Welding nozzle
119.345
Only plus / plus-S

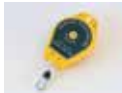


Overlap welding nozzle
119.346
Only plus / plus-S



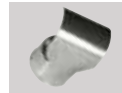
Solder sleeve reflector
119.347
Only plus / plus-S

fuego HG1600



Spring balancer
154.089

NEW



Reflector nozzle
119.344

General supplies for heat guns



Silicone pressure roller
40 mm
130.611



Brass brush
130.612



Silicone pressure roller
30 mm
130.146



Welding rod HDPE, black
Ø 4 mm, 5 kg bag
115.366



PTFE pressure roller
30 mm
131.693



Welding rod PP, natural
Ø 4 mm, 5 kg bag
115.355



Pressure roller
119.348



Scraper set
119.178



Scraper
119.177



Welding rods set
PP: 119.179
HDPE: 119.180
ABS: 119.181

Semi Automatic

Eyelet hand pressing tool ET10



Used in banner and tarpaulin industry



10'000 Eyelets included in scope of delivery



Riveting and piercing in one single step

- Manual operation
- No electricity needed
- Inner diameter of 10 mm
- 2 dies included
- Riveting and piercing in one single step
- Mobile
- Easy to operate



| | | |
|------------------------|------|-----------------|
| Dimensions (L x W x H) | mm | 300 x 480 x 610 |
| Weight | kg | 14.5 |
| Hole Size | mm | 10 |
| Flange Diameter | mm | 19 |
| Under Flange Height | mm | 5 |
| Cartridge Capacity | pcs. | 200 |

Scope of delivery:

10'000 pcs eyelets, mounting tool for installation,
2 sets of dies

Order No.:

| | |
|--------------------------------|---------|
| Eyelet hand pressing tool ET10 | 143.933 |
| 10'000 pcs eyelets for ET10 | 146.237 |



Weldy tools are used all over the world!



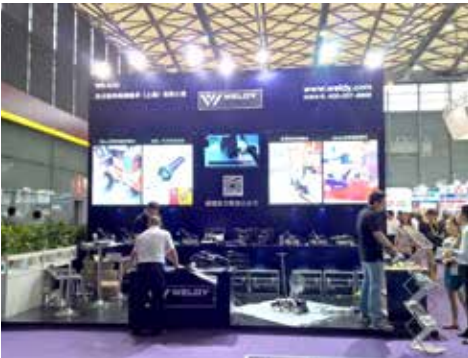
Headquarters in Switzerland



Weldy production site in Shanghai



No tool leaves the production site before being tested. Regular, intensive application tests proof the quality of all Weldy tools.



Presence around the globe



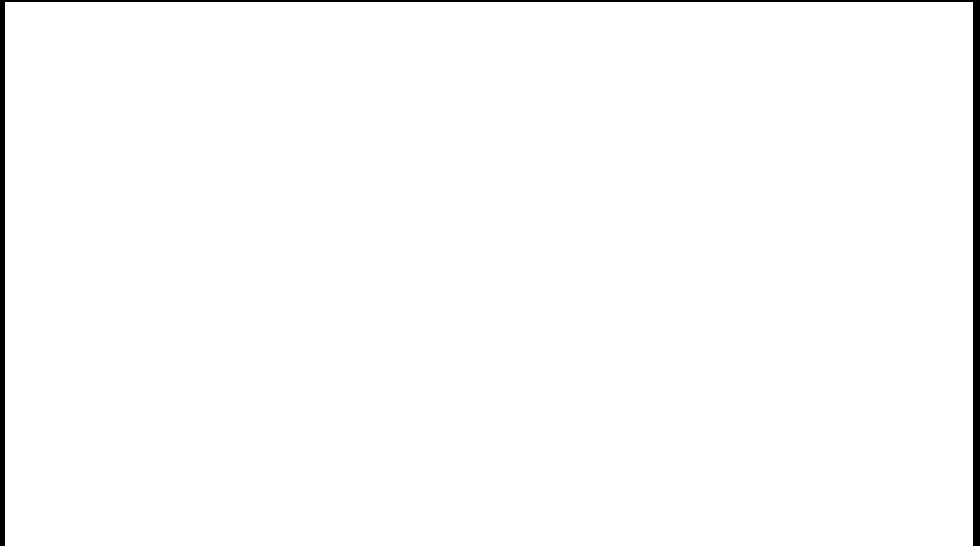
Get your branded tool

Due to our continuing program of research and development, the specifications herein are subject to change without prior notice.



Visit our YouTube-Channel: www.youtube.com/WELDYhotairtools

Your Sales and Service partner



WELDY AG
Galileo-Strasse 10

CH-6056 Kaegiswil
Switzerland

sales@weldysa.co.za

www.weldysa.co.za